

6 コホート観察結果

コホートとは、1年間あるいは四半期などの時期を定めて、この間に治療を開始した患者の集団を指します。このコホート集団を一定期間追跡し、治療終了時点での成績を観察します。世界的に治療サービスの評価に広く用いられており、WHOでは、①治癒、②治療完了、③死亡、④失敗、⑤脱落、⑥転出、⑦評価できず、に分類しています。①+②を「治療成功」とよびWHOは85%達成を目標にしています。

2007年からの結核登録者情報システムでは、前年登録の肺結核患者を対象に入力された情報から自動判定し、15のコードに分類しています。なお、「結核の統計」など一般的には15区分をまとめ、①治癒、②治療完了、③死亡、④失敗、⑤脱落、⑥転出、⑦12か月を越える治療、⑧判定不能、の8区分で表しています。

■治療経過の判定基準

判定区分	判定基準
①治癒	1. 治癒 1年以内で指示中止（完遂）の月を含む過去3ヶ月と
②完了	2. 完了 それ以前の2回菌陰性を確認→治癒、どちらか1回→完了 3. 完了※ 菌陽性結果後菌陰性を確認せず指示中止（完遂）
③死亡	4. 死亡 1年以内で治療完遂前に死亡
④失敗	5. 失敗 5月目以降に培養陽性が1度でもあり
⑤脱落	6. 脱落1 連続60日以上あるいは2月以上中断 7. 脱落2 指示中止（完遂）だが180日未満あるいは270日未満の治療
⑥転出	8. 転出 1年以内で治療完遂前に転出
⑦12か月を越える治療	9. 12か月越治療1 標準治療が途中から変更となり長期化の可能性 10. 12か月越治療2 その他の理由で長期化
⑧判定不能	11. 判定不能1 治療開始時治療なし（治療開始前死亡、培検診断等）能 12. 判定不能2 治療開始時治療内容不明（入力手技の誤り、未把握等） 13. 判定不能3 治療開始時標準治療でない 14. 判定不能4 1年以内で治療完遂したが途中でINHあるいはRFP中止 15. 判定不能5 治療開始後まもないため判定の情報不十分。その他

前年新登録肺結核患者数－登録時総合患者分類コード、コホート観察、保健所別

(人)

		肺 結 核 活 動 性					
		総 数	喀 痰 塗 抹 陽 性			その他の結核菌陽性	菌陰性・その他
			総数	初回治療	再治療		
総 数	総 数	233 (100.0%)	115 (100.0%)	108 (100.0%)	7 (100.0%)	80 (100.0%)	38 (100.0%)
	治 癒 (%)	12 (5.2%)	8 (7.0%)	8 (7.4%)	0 (0.0%)	3 (3.8%)	1 (2.6%)
	治療完了 (%)	100 (42.9%)	42 (36.5%)	40 (37.0%)	2 (28.6%)	39 (48.8%)	19 (50.0%)
	死 亡 (%)	50 (21.5%)	33 (28.7%)	32 (29.6%)	1 (14.3%)	14 (17.5%)	3 (7.9%)
	治療失敗 (%)	1 (0.4%)	0 (0.0%)	0 (0.0%)	0 (0.0%)	1 (1.3%)	0 (0.0%)
	脱落中断 (%)	24 (10.3%)	5 (4.3%)	4 (3.7%)	1 (14.3%)	12 (15.0%)	7 (18.4%)
	転 出 (%)	2 (0.9%)	0 (0.0%)	0 (0.0%)	0 (0.0%)	1 (1.3%)	1 (2.6%)
	12か月を越える治療 (%)	15 (6.4%)	10 (8.7%)	9 (8.3%)	1 (14.3%)	3 (3.8%)	2 (5.3%)
	判定不能 (%)	29 (12.4%)	17 (14.8%)	15 (13.9%)	2 (28.6%)	7 (8.8%)	5 (13.2%)
熊 本 市	総 数	83 (100.0%)	37 (100.0%)	37 (100.0%)	0 -	27 (100.0%)	19 (100.0%)
	治 癒 (%)	0 (0.0%)	0 (0.0%)	0 (0.0%)	0 -	0 (0.0%)	0 (0.0%)
	治療完了 (%)	37 (44.6%)	13 (35.1%)	13 (35.1%)	0 -	12 (44.4%)	12 (63.2%)
	死 亡 (%)	24 (28.9%)	13 (35.1%)	13 (35.1%)	0 -	8 (29.6%)	3 (15.8%)
	治療失敗 (%)	0 (0.0%)	0 (0.0%)	0 (0.0%)	0 -	0 (0.0%)	0 (0.0%)
	脱落中断 (%)	9 (10.8%)	3 (8.1%)	3 (8.1%)	0 -	4 (14.8%)	2 (10.5%)
	転 出 (%)	1 (1.2%)	0 (0.0%)	0 (0.0%)	0 -	1 (3.7%)	0 (0.0%)
	12か月を越える治療 (%)	6 (7.2%)	4 (10.8%)	4 (10.8%)	0 -	0 (0.0%)	2 (10.5%)
	判定不能 (%)	6 (7.2%)	4 (10.8%)	4 (10.8%)	0 -	2 (7.4%)	0 (0.0%)
有 明	総 数	22 (100.0%)	10 (100.0%)	8 (100.0%)	2 (100.0%)	7 (100.0%)	5 (100.0%)
	治 癒 (%)	0 (0.0%)	0 (0.0%)	0 (0.0%)	0 (0.0%)	0 (0.0%)	0 (0.0%)
	治療完了 (%)	7 (31.8%)	3 (30.0%)	2 (25.0%)	1 (50.0%)	3 (42.9%)	1 (20.0%)
	死 亡 (%)	3 (13.6%)	3 (30.0%)	3 (37.5%)	0 (0.0%)	0 (0.0%)	0 (0.0%)
	治療失敗 (%)	0 (0.0%)	0 (0.0%)	0 (0.0%)	0 (0.0%)	0 (0.0%)	0 (0.0%)
	脱落中断 (%)	2 (9.1%)	0 (0.0%)	0 (0.0%)	0 (0.0%)	1 (14.3%)	1 (20.0%)
	転 出 (%)	0 (0.0%)	0 (0.0%)	0 (0.0%)	0 (0.0%)	0 (0.0%)	0 (0.0%)
	12か月を越える治療 (%)	0 (0.0%)	0 (0.0%)	0 (0.0%)	0 (0.0%)	0 (0.0%)	0 (0.0%)
	判定不能 (%)	10 (45.5%)	4 (40.0%)	3 (37.5%)	1 (50.0%)	3 (42.9%)	3 (60.0%)

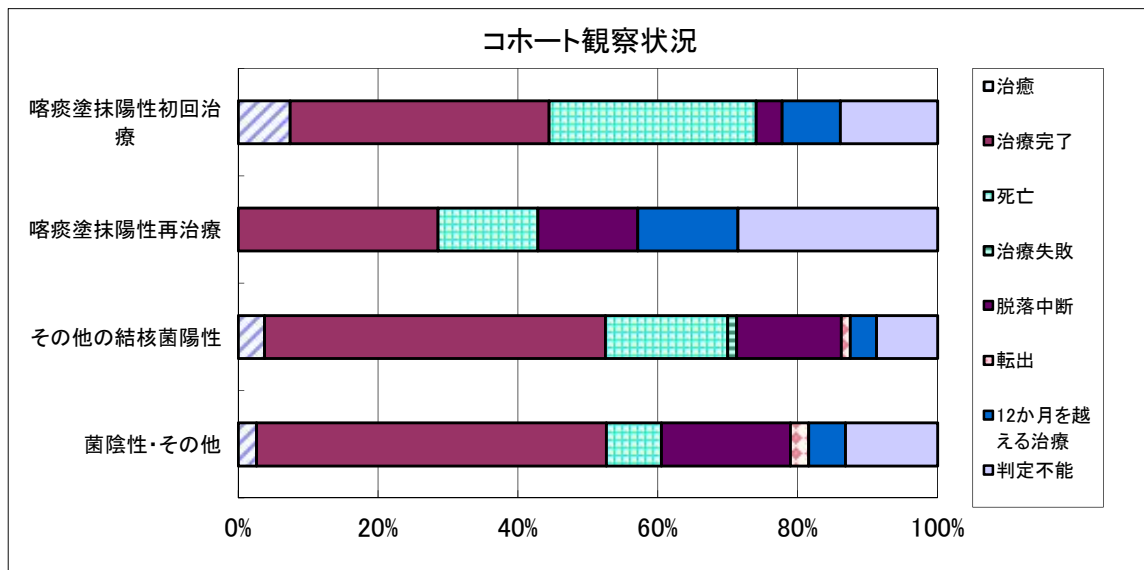
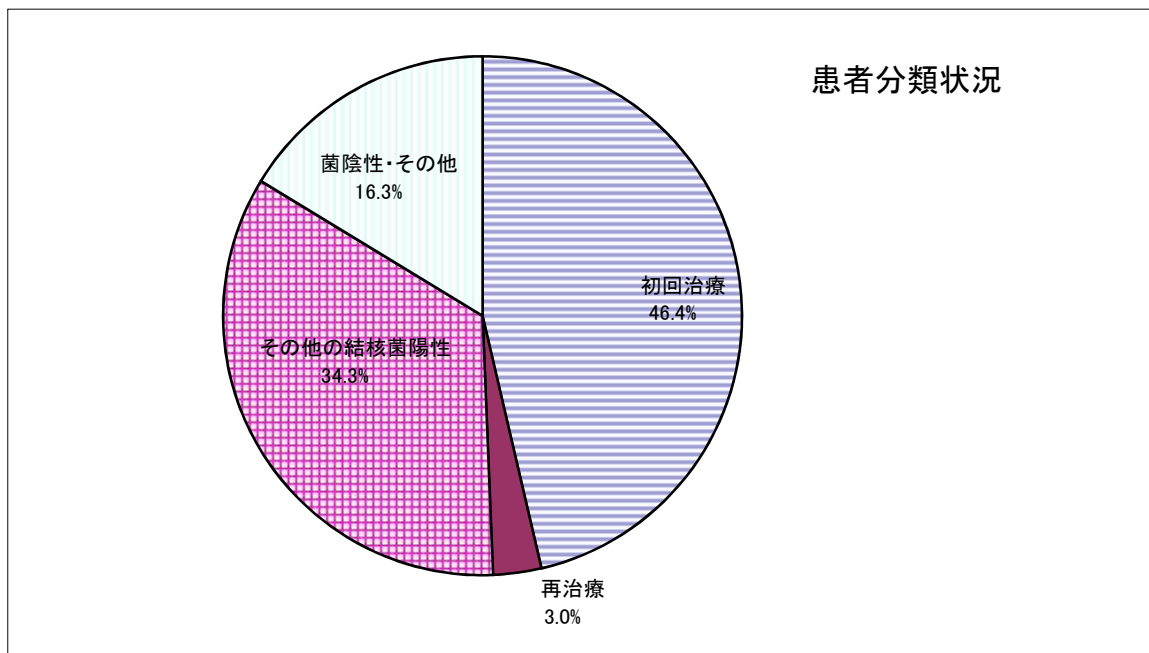
		肺 結 核 活 動 性					
		総 数	喀 痰 塗 抹 陽 性			その他の結核菌陽性	菌陰性・その他
			総数	初回治療	再治療		
山 鹿	総 数	10 (100.0%)	8 (100.0%)	8 (100.0%)	0 -	2 (100.0%)	0 -
	治 癒 (%)	0 (0.0%)	0 (0.0%)	0 (0.0%)	0 -	0 (0.0%)	0 -
	治療完了 (%)	5 (50.0%)	4 (50.0%)	4 (50.0%)	0 -	1 (50.0%)	0 -
	死 亡 (%)	3 (30.0%)	3 (37.5%)	3 (37.5%)	0 -	0 (0.0%)	0 -
	治療失敗 (%)	0 (0.0%)	0 (0.0%)	0 (0.0%)	0 -	0 (0.0%)	0 -
	脱落中断 (%)	1 (10.0%)	0 (0.0%)	0 (0.0%)	0 -	1 (50.0%)	0 -
	転 出 (%)	0 (0.0%)	0 (0.0%)	0 (0.0%)	0 -	0 (0.0%)	0 -
	12か月を越える治療 (%)	1 (10.0%)	1 (12.5%)	1 (12.5%)	0 -	0 (0.0%)	0 -
	判定不能 (%)	0 (0.0%)	0 (0.0%)	0 (0.0%)	0 -	0 (0.0%)	0 -
菊 池	総 数	10 (100.0%)	3 (100.0%)	3 (100.0%)	0 -	6 (100.0%)	1 (100.0%)
	治 癒 (%)	1 (10.0%)	0 (0.0%)	0 (0.0%)	0 -	1 (16.7%)	0 (0.0%)
	治療完了 (%)	6 (60.0%)	1 (33.3%)	1 (33.3%)	0 -	4 (66.7%)	1 (100.0%)
	死 亡 (%)	2 (20.0%)	1 (33.3%)	1 (33.3%)	0 -	1 (16.7%)	0 (0.0%)
	治療失敗 (%)	0 (0.0%)	0 (0.0%)	0 (0.0%)	0 -	0 (0.0%)	0 (0.0%)
	脱落中断 (%)	0 (0.0%)	0 (0.0%)	0 (0.0%)	0 -	0 (0.0%)	0 (0.0%)
	転 出 (%)	0 (0.0%)	0 (0.0%)	0 (0.0%)	0 -	0 (0.0%)	0 (0.0%)
	12か月を越える治療 (%)	0 (0.0%)	0 (0.0%)	0 (0.0%)	0 -	0 (0.0%)	0 (0.0%)
	判定不能 (%)	1 (10.0%)	1 (33.3%)	1 (33.3%)	0 -	0 (0.0%)	0 (0.0%)
阿 蘇	総 数	9 (100.0%)	3 (100.0%)	3 (100.0%)	0 -	5 (100.0%)	1 (100.0%)
	治 癒 (%)	2 (22.2%)	1 (33.3%)	1 (33.3%)	0 -	0 (0.0%)	1 (100.0%)
	治療完了 (%)	5 (55.6%)	2 (66.7%)	2 (66.7%)	0 -	3 (60.0%)	0 (0.0%)
	死 亡 (%)	0 (0.0%)	0 (0.0%)	0 (0.0%)	0 -	0 (0.0%)	0 (0.0%)
	治療失敗 (%)	0 (0.0%)	0 (0.0%)	0 (0.0%)	0 -	0 (0.0%)	0 (0.0%)
	脱落中断 (%)	2 (22.2%)	0 (0.0%)	0 (0.0%)	0 -	2 (40.0%)	0 (0.0%)
	転 出 (%)	0 (0.0%)	0 (0.0%)	0 (0.0%)	0 -	0 (0.0%)	0 (0.0%)
	12か月を越える治療 (%)	0 (0.0%)	0 (0.0%)	0 (0.0%)	0 -	0 (0.0%)	0 (0.0%)
	判定不能 (%)	0 (0.0%)	0 (0.0%)	0 (0.0%)	0 -	0 (0.0%)	0 (0.0%)

		肺 結 核 活 動 性					
		総 数	喀 痰 塗 抹 陽 性			その他の結核菌陽性	菌陰性・その他
			総数	初回治療	再治療		
御 船	総 数	8 (100.0%)	5 (100.0%)	5 (100.0%)	0 -	3 (100.0%)	0 -
	治 癒 (%)	0 (0.0%)	0 (0.0%)	0 (0.0%)	0 -	0 (0.0%)	0 -
	治療完了 (%)	4 (50.0%)	3 (60.0%)	3 (60.0%)	0 -	1 (33.3%)	0 -
	死 亡 (%)	4 (50.0%)	2 (40.0%)	2 (40.0%)	0 -	2 (66.7%)	0 -
	治療失敗 (%)	0 (0.0%)	0 (0.0%)	0 (0.0%)	0 -	0 (0.0%)	0 -
	脱落中断 (%)	0 (0.0%)	0 (0.0%)	0 (0.0%)	0 -	0 (0.0%)	0 -
	転 出 (%)	0 (0.0%)	0 (0.0%)	0 (0.0%)	0 -	0 (0.0%)	0 -
	12か月を越える治療 (%)	0 (0.0%)	0 (0.0%)	0 (0.0%)	0 -	0 (0.0%)	0 -
	判定不能 (%)	0 (0.0%)	0 (0.0%)	0 (0.0%)	0 -	0 (0.0%)	0 -
宇 城	総 数	21 (100.0%)	12 (100.0%)	12 (100.0%)	0 -	8 (100.0%)	1 (100.0%)
	治 癒 (%)	1 (4.8%)	1 (8.3%)	1 (8.3%)	0 -	0 (0.0%)	0 (0.0%)
	治療完了 (%)	8 (38.1%)	5 (41.7%)	5 (41.7%)	0 -	3 (37.5%)	0 (0.0%)
	死 亡 (%)	5 (23.8%)	4 (33.3%)	4 (33.3%)	0 -	1 (12.5%)	0 (0.0%)
	治療失敗 (%)	0 (0.0%)	0 (0.0%)	0 (0.0%)	0 -	0 (0.0%)	0 (0.0%)
	脱落中断 (%)	3 (14.3%)	0 (0.0%)	0 (0.0%)	0 -	2 (25.0%)	1 (100.0%)
	転 出 (%)	0 (0.0%)	0 (0.0%)	0 (0.0%)	0 -	0 (0.0%)	0 (0.0%)
	12か月を越える治療 (%)	3 (14.3%)	1 (8.3%)	1 (8.3%)	0 -	2 (25.0%)	0 (0.0%)
	判定不能 (%)	1 (4.8%)	1 (8.3%)	1 (8.3%)	0 -	0 (0.0%)	0 (0.0%)
八 代	総 数	24 (100.0%)	16 (100.0%)	14 (100.0%)	2 (100.0%)	3 (100.0%)	5 (100.0%)
	治 癒 (%)	1 (4.2%)	1 (6.3%)	1 (7.1%)	0 (0.0%)	0 (0.0%)	0 (0.0%)
	治療完了 (%)	8 (33.3%)	5 (31.3%)	5 (35.7%)	0 (0.0%)	1 (33.3%)	2 (40.0%)
	死 亡 (%)	2 (8.3%)	2 (12.5%)	1 (7.1%)	1 (50.0%)	0 (0.0%)	0 (0.0%)
	治療失敗 (%)	0 (0.0%)	0 (0.0%)	0 (0.0%)	0 (0.0%)	0 (0.0%)	0 (0.0%)
	脱落中断 (%)	4 (16.7%)	1 (6.3%)	1 (7.1%)	0 (0.0%)	1 (33.3%)	2 (40.0%)
	転 出 (%)	1 (4.2%)	0 (0.0%)	0 (0.0%)	0 (0.0%)	0 (0.0%)	1 (20.0%)
	12か月を越える治療 (%)	0 (0.0%)	0 (0.0%)	0 (0.0%)	0 (0.0%)	0 (0.0%)	0 (0.0%)
	判定不能 (%)	8 (33.3%)	7 (43.8%)	6 (42.9%)	1 (50.0%)	1 (33.3%)	0 (0.0%)

		肺 結 核 活 動 性					
		総 数	喀 痰 塗 抹 陽 性			その他の結核菌陽性	菌陰性・その他
			総数	初回治療	再治療		
水 俣	総 数	8 (100.0%)	4 (100.0%)	3 (100.0%)	1 (100.0%)	3 (100.0%)	1 (100.0%)
	治 癒 (%)	0 (0.0%)	0 (0.0%)	0 (0.0%)	0 (0.0%)	0 (0.0%)	0 (0.0%)
	治療完了 (%)	2 (25.0%)	1 (25.0%)	1 (33.3%)	0 (0.0%)	1 (33.3%)	0 (0.0%)
	死 亡 (%)	2 (25.0%)	1 (25.0%)	1 (33.3%)	0 (0.0%)	1 (33.3%)	0 (0.0%)
	治療失敗 (%)	0 (0.0%)	0 (0.0%)	0 (0.0%)	0 (0.0%)	0 (0.0%)	0 (0.0%)
	脱落中断 (%)	1 (12.5%)	1 (25.0%)	0 (0.0%)	1 (100.0%)	0 (0.0%)	0 (0.0%)
	転 出 (%)	0 (0.0%)	0 (0.0%)	0 (0.0%)	0 (0.0%)	0 (0.0%)	0 (0.0%)
	12か月を越える治療 (%)	1 (12.5%)	1 (25.0%)	1 (33.3%)	0 (0.0%)	0 (0.0%)	0 (0.0%)
	判定不能 (%)	2 (25.0%)	0 (0.0%)	0 (0.0%)	0 (0.0%)	1 (33.3%)	1 (100.0%)
人 吉	総 数	14 (100.0%)	5 (100.0%)	4 (100.0%)	1 (100.0%)	5 (100.0%)	4 (100.0%)
	治 癒 (%)	0 (0.0%)	0 (0.0%)	0 (0.0%)	0 (0.0%)	0 (0.0%)	0 (0.0%)
	治療完了 (%)	6 (42.9%)	1 (20.0%)	1 (25.0%)	0 (0.0%)	3 (60.0%)	2 (50.0%)
	死 亡 (%)	1 (7.1%)	1 (20.0%)	1 (25.0%)	0 (0.0%)	0 (0.0%)	0 (0.0%)
	治療失敗 (%)	1 (7.1%)	0 (0.0%)	0 (0.0%)	0 (0.0%)	1 (20.0%)	0 (0.0%)
	脱落中断 (%)	1 (7.1%)	0 (0.0%)	0 (0.0%)	0 (0.0%)	0 (0.0%)	1 (25.0%)
	転 出 (%)	0 (0.0%)	0 (0.0%)	0 (0.0%)	0 (0.0%)	0 (0.0%)	0 (0.0%)
	12か月を越える治療 (%)	4 (28.6%)	3 (60.0%)	2 (50.0%)	1 (100.0%)	1 (20.0%)	0 (0.0%)
	判定不能 (%)	1 (7.1%)	0 (0.0%)	0 (0.0%)	0 (0.0%)	0 (0.0%)	1 (25.0%)
天 草	総 数	24 (100.0%)	12 (100.0%)	11 (100.0%)	1 (100.0%)	11 (100.0%)	1 (100.0%)
	治 癒 (%)	7 (29.2%)	5 (41.7%)	5 (45.5%)	0 (0.0%)	2 (18.2%)	0 (0.0%)
	治療完了 (%)	12 (50.0%)	4 (33.3%)	3 (27.3%)	1 (100.0%)	7 (63.6%)	1 (100.0%)
	死 亡 (%)	4 (16.7%)	3 (25.0%)	3 (27.3%)	0 (0.0%)	1 (9.1%)	0 (0.0%)
	治療失敗 (%)	0 (0.0%)	0 (0.0%)	0 (0.0%)	0 (0.0%)	0 (0.0%)	0 (0.0%)
	脱落中断 (%)	1 (4.2%)	0 (0.0%)	0 (0.0%)	0 (0.0%)	1 (9.1%)	0 (0.0%)
	転 出 (%)	0 (0.0%)	0 (0.0%)	0 (0.0%)	0 (0.0%)	0 (0.0%)	0 (0.0%)
	12か月を越える治療 (%)	0 (0.0%)	0 (0.0%)	0 (0.0%)	0 (0.0%)	0 (0.0%)	0 (0.0%)
	判定不能 (%)	0 (0.0%)	0 (0.0%)	0 (0.0%)	0 (0.0%)	0 (0.0%)	0 (0.0%)

前年新登録肺結核患者数—登録時総合患者分類コード、コホート観察

	総数	* 喀痰塗抹陽性			その他の結核菌陽性	菌陰性・その他
		総数	初回治療	再治療		
総数	233	115	108	7	80	38
治癒	12	8	8	0	3	1
治療完了	100	42	40	2	39	19
死亡	50	33	32	1	14	3
治療失敗	1	0	0	0	1	0
脱落中断	24	5	4	1	12	7
転出	2	0	0	0	1	1
12か月を越える治療	15	10	9	1	3	2
判定不能	29	17	15	2	7	5



保健所別治療成績

	総数	熊本市	有明	山鹿	菊池	阿蘇	御船	宇城	八代	水俣	人吉	天草
総数	233	83	22	10	10	9	8	21	24	8	14	24
治癒	12	0	0	0	1	2	0	1	1	0	0	7
治療完了	100	37	7	5	6	5	4	8	8	2	6	12
死亡	50	24	3	3	2	0	4	5	2	2	1	4
治療失敗	1	0	0	0	0	0	0	0	0	0	1	0
脱落中断	24	9	2	1	0	2	0	3	4	1	1	1
転出	2	1	0	0	0	0	0	0	1	0	0	0
12か月を越える治療	15	6	0	1	0	0	0	3	0	1	4	0
判定不能	29	6	10	0	1	0	0	1	8	2	1	0

