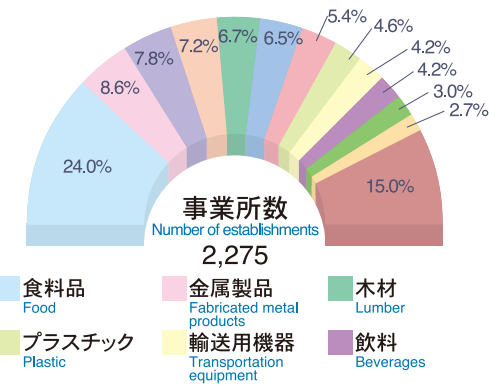
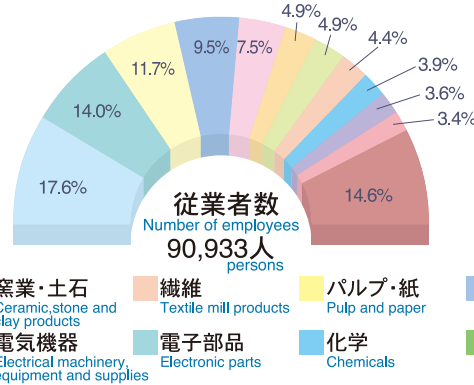


# 7 工業 Manufacturing

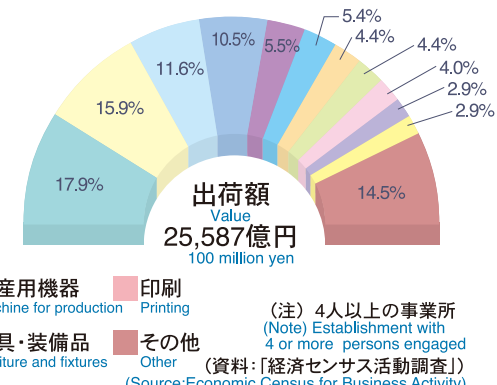
● 産業分類別事業所数 (平成23年)  
Number of establishments by industry(2011)



● 産業分類別従業者数 (平成23年)  
Number of persons employees by industry(2011)



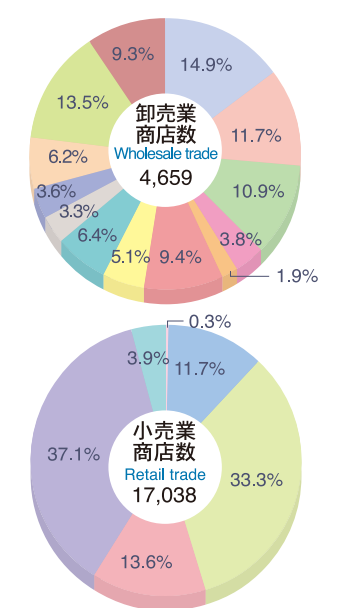
● 産業分類別製造品出荷額等 (平成23年)  
Value of shipments by industry(2011)



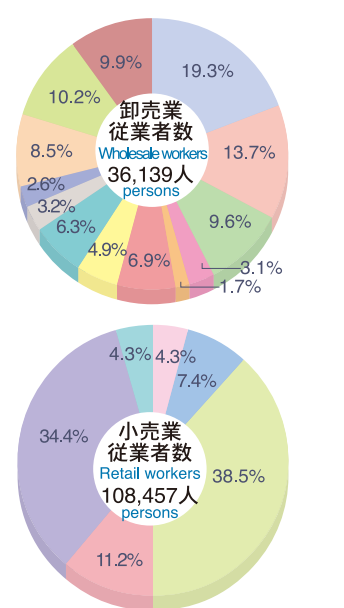
(注) 4人以上の事業所  
(Note) Establishment with 4 or more persons engaged  
(資料:「経済センサス活動調査」)  
(Source:Economic Census for Business Activity)

# 8 商業 Domestic Trade

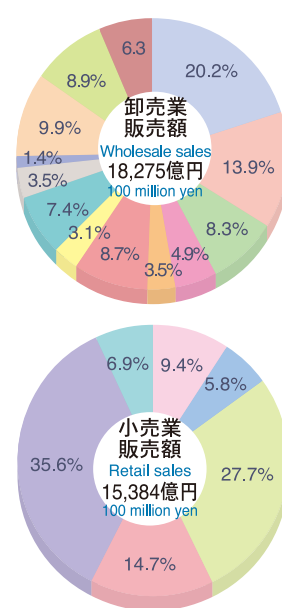
● 産業分類別商店数 (平成24年)  
Number of establishments by industry(2012)



● 産業分類別従業者数 (平成24年)  
Number of employees by industry(2012)



● 産業分類別年間商品販売額 (平成24年)  
Total sales of merchandise during the year by industry(2012)

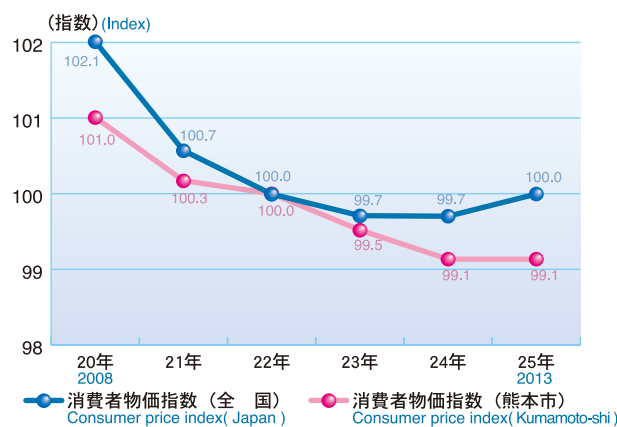


- 農畜産物・水産物 (Agricultural animal and poultry, farm and aquatic products)
- 食料・飲料 (Food and beverages)
- 建築材料 (Building materials)
- 化学製品 (Chemicals and related products)
- 鉱物・金属材料等 (Minerals and metals, etc.)
- 産業機械器具 (Industry machinery and equipment)
- 自動車 (Motor vehicles)
- 電気機械器具 (Electrical machinery, equipment and supplies)
- その他の機械器具 (Miscellaneous machinery and equipment)
- 家具・建具・じゅう器等 (Furniture, fixtures and house furnishings)
- 医薬品・化粧品等 (Drugs and toiletries)
- 他に分類されない卸売業 (Other products, not classified elsewhere)
- その他 (Other)
- 各種商品 (General merchandise)
- 織物・衣服・身の回り品 (Dry goods, apparel and accessories)
- 飲食物品 (Food and beverages)
- 機械器具 (Machinery and equipment)
- 無店舗小売業 (Nonstore retailers)
- その他 (Other)

(注) 飲食店を除く (Note) Excluding eating and drinking places

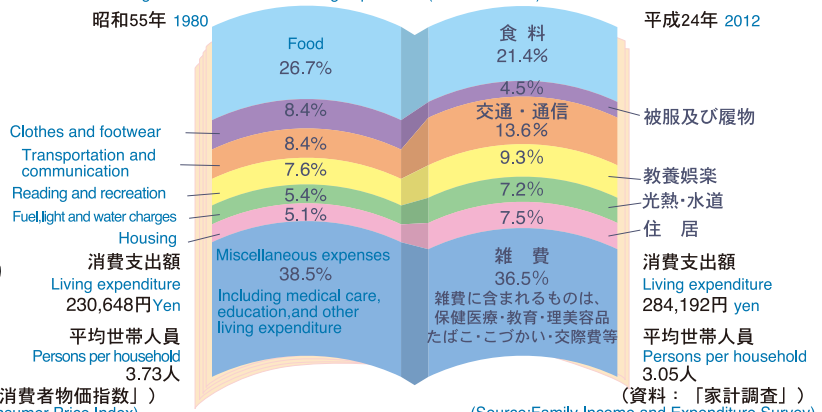
# 9 生活 Standard of Living

● 消費者物価指数の推移 (平成22年=100) Consumer price index(2010=100)



(資料:「消費者物価指数」)  
(Source:Consumer Price Index)

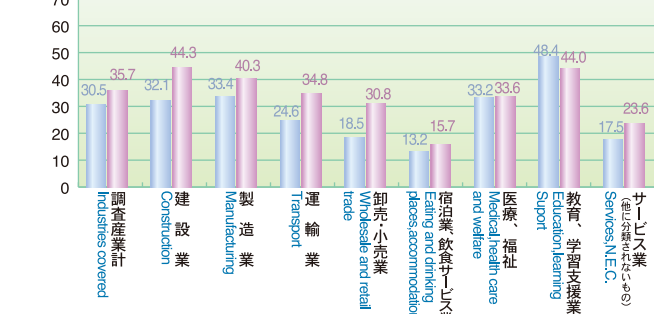
● 家計消費支出 (熊本市勤労者世帯1か月平均:単身世帯を除く)  
Average workers household living expenditure(Kumamoto-shi)



(資料:「家計調査」)  
(Source:Family Income and Expenditure Survey)

# 10 労働 Labour

● 産業別常用労働者1人平均月間現金給与額 (平成24年)  
Average monthly cash earnings per regular employee by industry(2012)

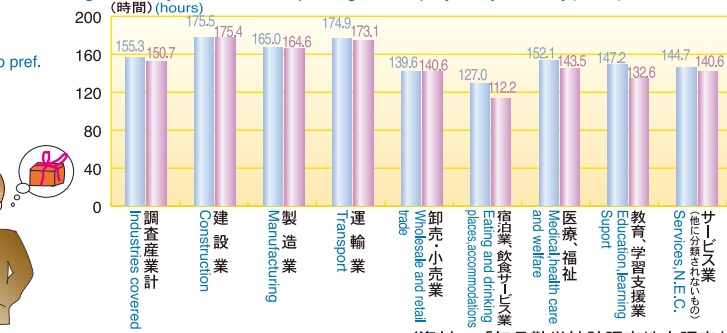


- 熊本県 (Kumamoto pref.)
- 国 (Japan)



(注) 常用労働者30人以上の事業所 (Note) Establishments with 30 or more regular employees

● 産業別常用労働者1人平均月間総実労働時間数 (平成24年)  
Average monthly hours worked per regular employee by industry(2012)



(資料:「毎月労働統計調査地方調査」)  
(Source:Monthly Labour Survey,Prefectural Survey)